

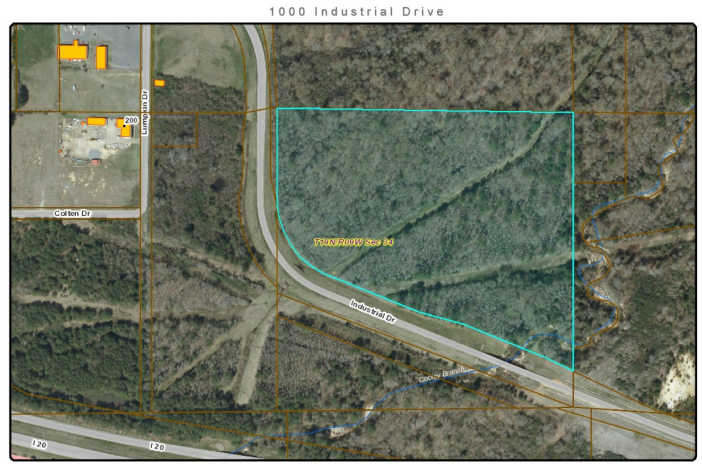
# I-20 Frontage Road Acreage

## 1000 Industrial Dr, Minden, LA 71055

Listing ID:	29939444
Status:	Active
Property Type:	Vacant Land For Sale
Possible Uses:	Hospitality, Office
Gross Land Area:	27 Acres
Sale Price:	\$5,400,000
Unit Price:	\$200,000 Per Acre
Sale Terms:	Cash to Seller
Nearest MSA:	Shreveport-Bossier City
County:	Webster
Highway Access:	Interstate 20, Hwy. 80, Hwy 531

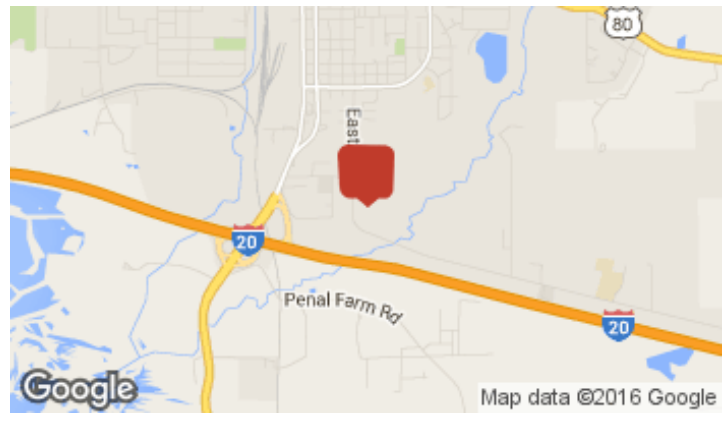
### Overview/Comments

27 acres on I-20 frontage road, Industrial Drive. Street numbers are approximate and will be determined by the appropriate municipal authority at a later date. Tax Increment Financing available. Information provided believed to be accurate but not guaranteed.



DISCLAIMER: Every reasonable effort has been made to assure the accuracy of the parcel data presented. The Webster Parish Assessor makes no warranties, express or implied, regarding the completeness, reliability or suitability of the site data and assumes no liability associated with the use or misuse of said data. The Assessor retains the right to make changes and update data on this site at anytime without notification. The parcel data on the base map is used to locate, identify and determine parcels of land in the Parish of Webster for assessment purposes only and is not to be used or interpreted as a legal survey or legal document. Additional data layers not appearing in the Assessor's Office are also presented for informational purposes only. Before proceeding in any legal matter, all data should be verified by consulting the appropriate parish or municipal office.

March 1, 2016  
1 inch = 283 feet  
0 150 300 450 600 Feet



### More Information Online

<http://www.lacdb.com/listing/29939444>

### QR Code

Scan this image with your mobile device:



### Property Contacts



#### Greg Carey

Carey Real Estate  
318-458-4113 [M]  
318-377-5115 [O]  
[geauxbroker@outlook.com](mailto:geauxbroker@outlook.com)