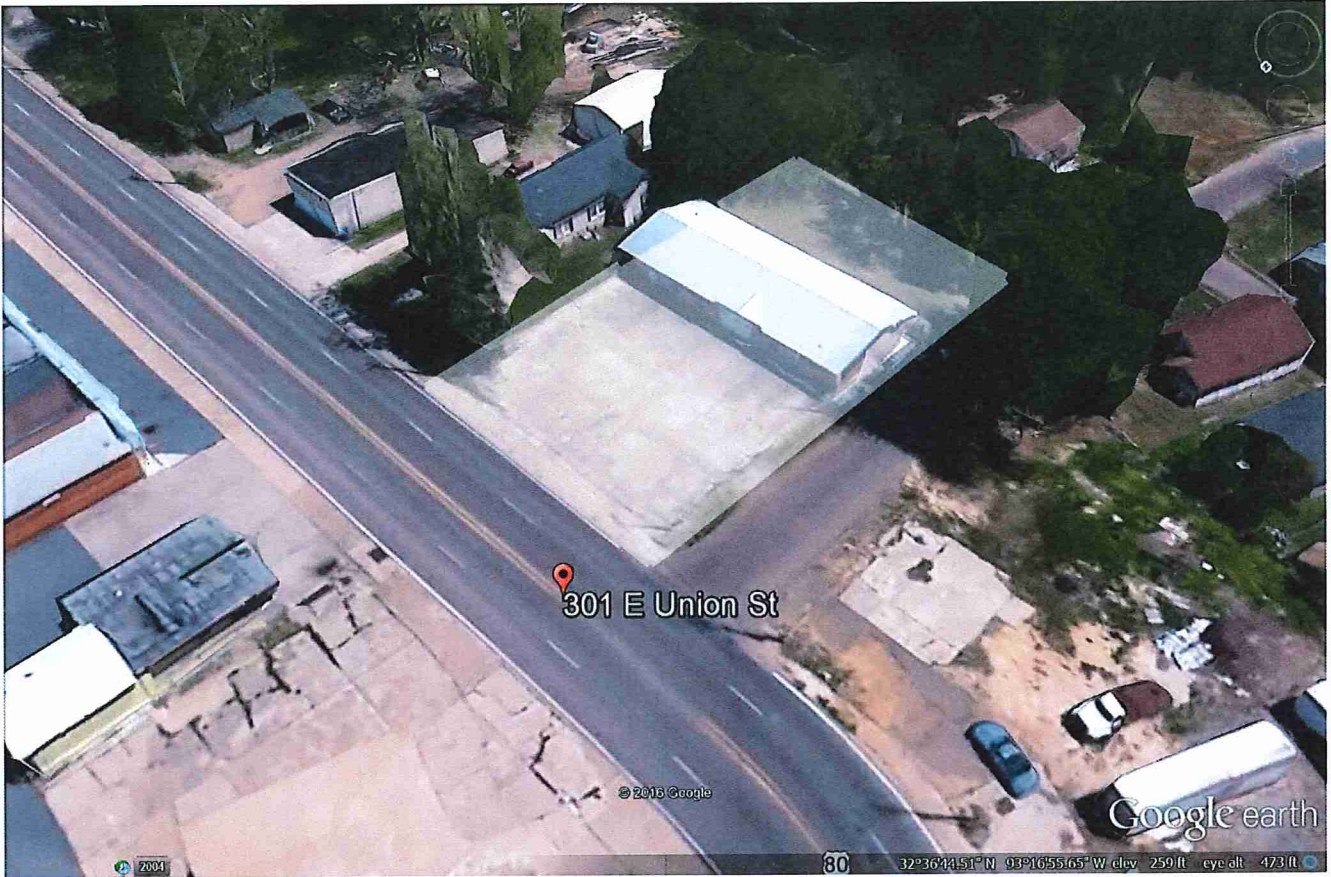




HIGHLIGHTS:

- **Large concrete building**
- **Corner lot**
- **3 half baths**
- **Large fenced parking area**
- **New metal roof**
- **Could be used as a auto repair shop**
- **\$125,000**



HIGHLIGHTS:

- **Large concrete building**
- **Corner lot**
- **3 half baths**
- **Large fenced parking area**
- **New metal roof**
- **Could be used as an auto repair shop**
- **\$125,000**



301 EAST UNION STREET, MINDEN,



PROFESSIONAL BACKGROUND

ANNETTE WILEY has been a real estate professional since 1993. She has achieved success by continually striving for excellence through education and a personal dedication to provide her clients with the highest quality service. She is familiar with the town and its offerings, local property values, financing alternatives; and for sellers: advertising and marketing strategies as well.

ANNETTE WILEY

Broker

318-455-6688 (M)

318-377-8652 (O)

Wileyrealestate20@yahoo.com